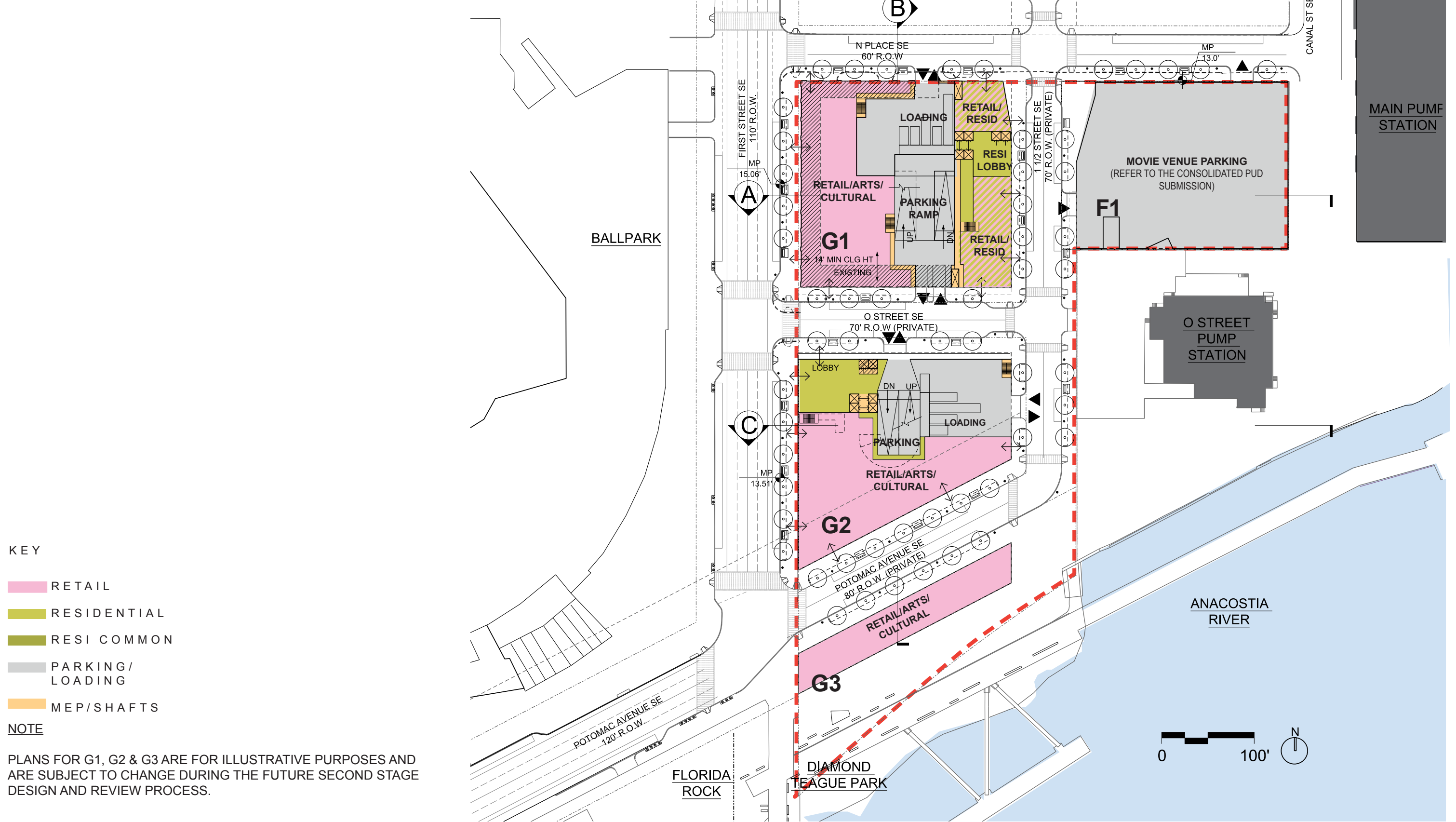


- KEY**
- RETAIL
 - RESIDENTIAL
 - RESI COMMON
 - PARKING / LOADING
 - MEP / SHAFTS

NOTE
 PLANS FOR G1, G2 & G3 ARE FOR ILLUSTRATIVE PURPOSES AND ARE SUBJECT TO CHANGE DURING THE FUTURE SECOND STAGE DESIGN AND REVIEW PROCESS.

GROUND FLOOR PLAN

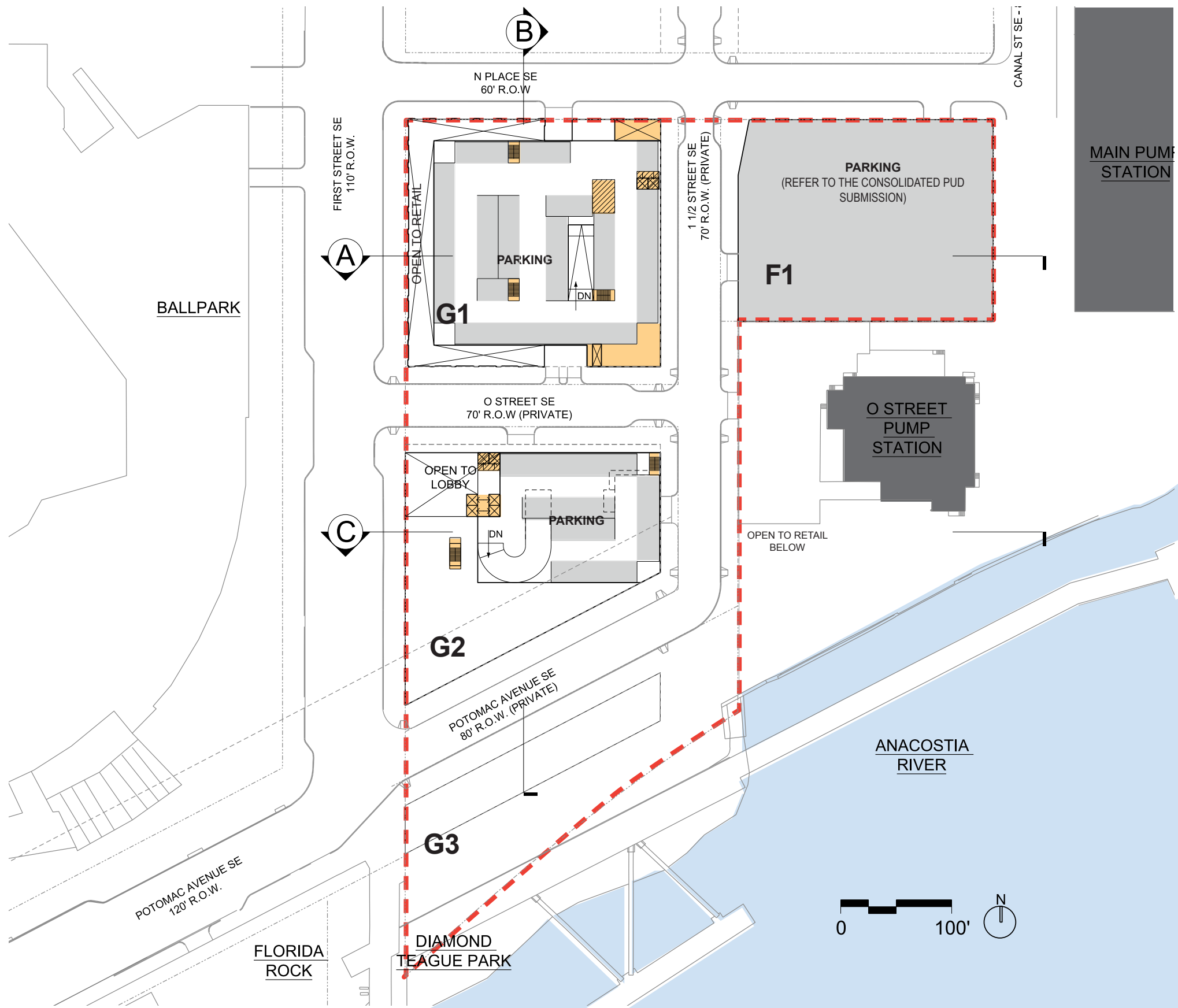


KEY

- RETAIL
- RESIDENTIAL
- RESI COMMON
- PARKING / LOADING
- MEP/SHAFTS

NOTE

PLANS FOR G1, G2 & G3 ARE FOR ILLUSTRATIVE PURPOSES AND ARE SUBJECT TO CHANGE DURING THE FUTURE SECOND STAGE DESIGN AND REVIEW PROCESS.



KEY

- RETAIL
- RESIDENTIAL
- RESI COMMON
- PARKING / LOADING
- MEP / SHAFTS

NOTE

PLANS FOR G1, G2 & G3 ARE FOR ILLUSTRATIVE PURPOSES AND ARE SUBJECT TO CHANGE DURING THE FUTURE SECOND STAGE DESIGN AND REVIEW PROCESS.

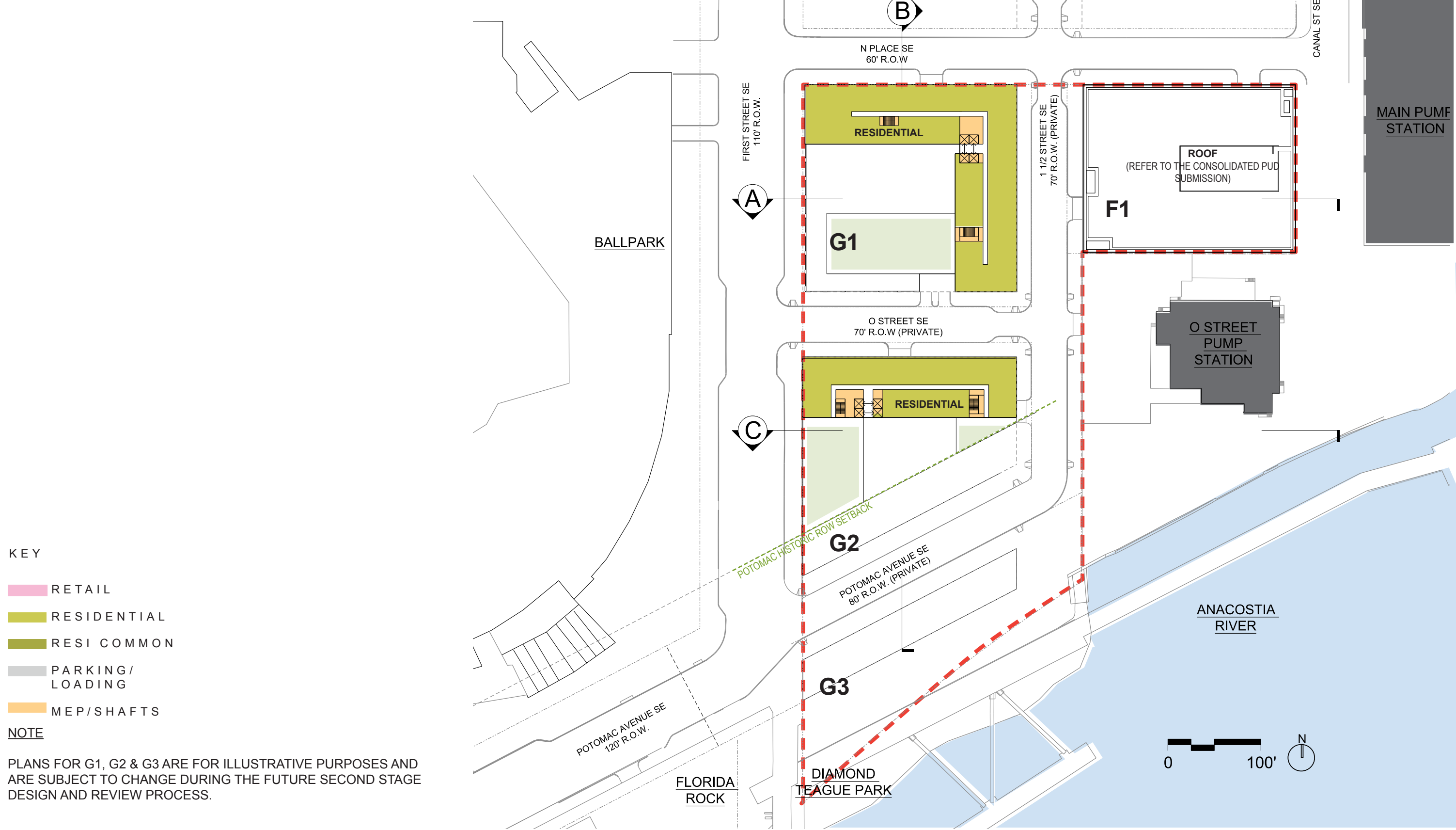
THE SCREENING OF ABOVE-GRADE PARKING WILL BE DESIGNED IN A FUTURE SECOND STAGE PUD APPROVAL PROCESS

3RD FLOOR PLAN





UPPER FLOORS (11-12)

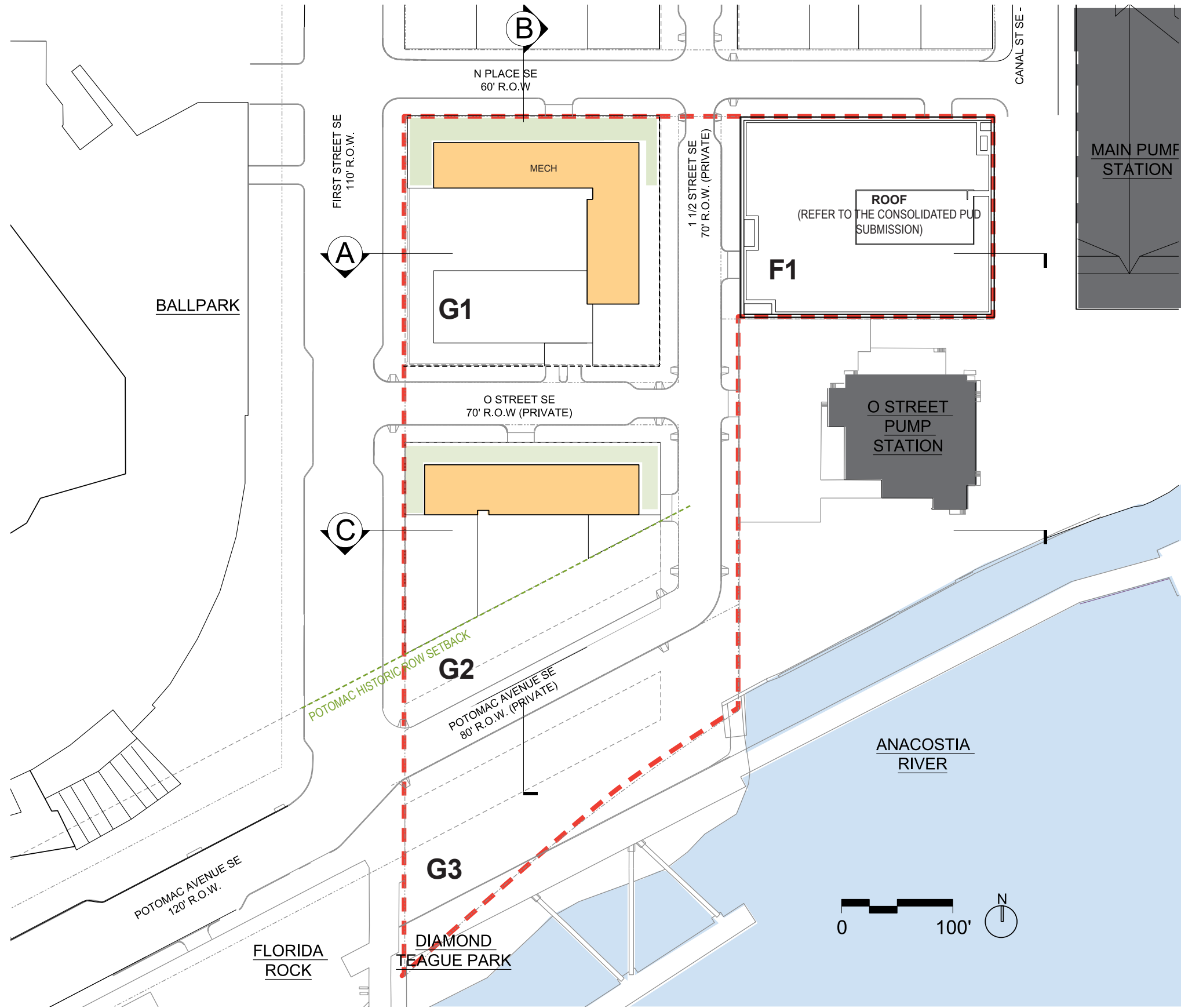


KEY

- RETAIL
- RESIDENTIAL
- RESI COMMON
- PARKING / LOADING
- MEP / SHAFTS

NOTE

PLANS FOR G1, G2 & G3 ARE FOR ILLUSTRATIVE PURPOSES AND ARE SUBJECT TO CHANGE DURING THE FUTURE SECOND STAGE DESIGN AND REVIEW PROCESS.



KEY

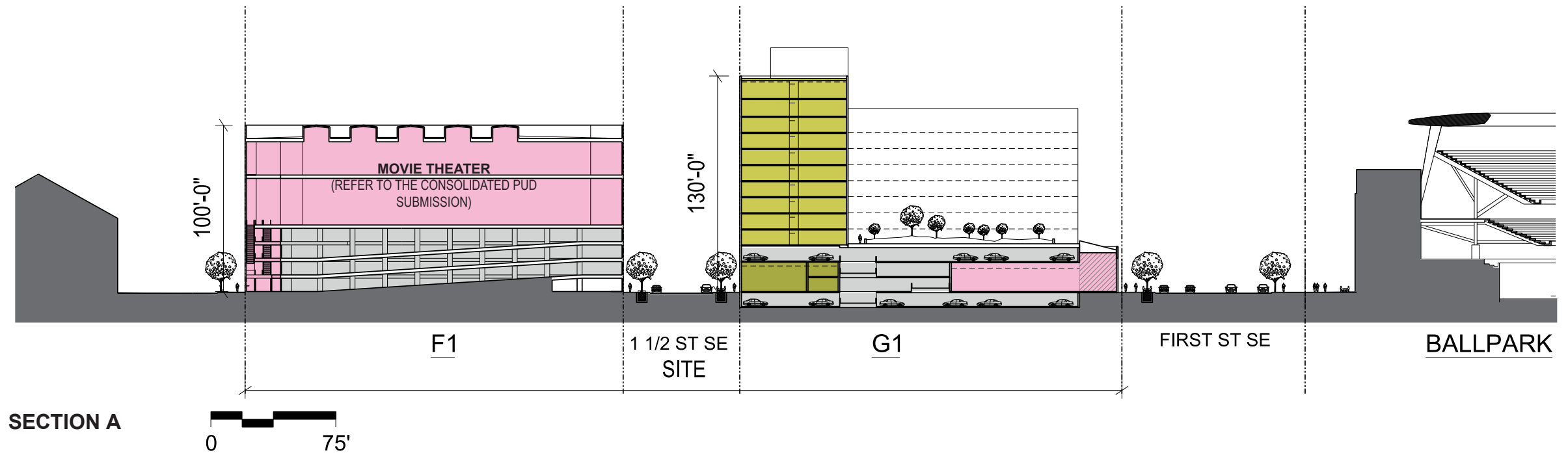
- RETAIL
- RESIDENTIAL
- RESI COMMON
- PARKING / LOADING
- MEP / SHAFTS

NOTE

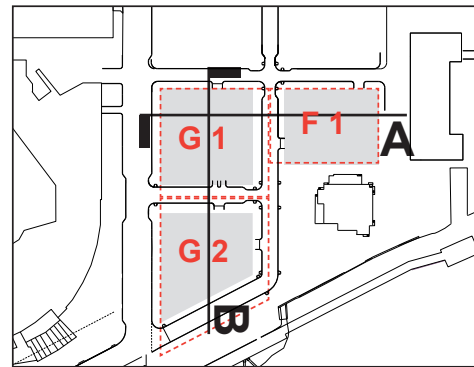
PLANS FOR G1, G2 & G3 ARE FOR ILLUSTRATIVE PURPOSES AND ARE SUBJECT TO CHANGE DURING THE FUTURE SECOND STAGE DESIGN AND REVIEW PROCESS.

WHILE NOT REQUESTED AS PART OF THIS FIRST STAGE APPLICATION, IT IS ANTICIPATED THAT THE SECOND STAGE APPLICATION FOR PARCELS G1 & G2 MAY REQUIRE RELIEF FROM ROOF STRUCTURE SETBACK REQUIREMENTS.

SITE SECTIONS



KEY

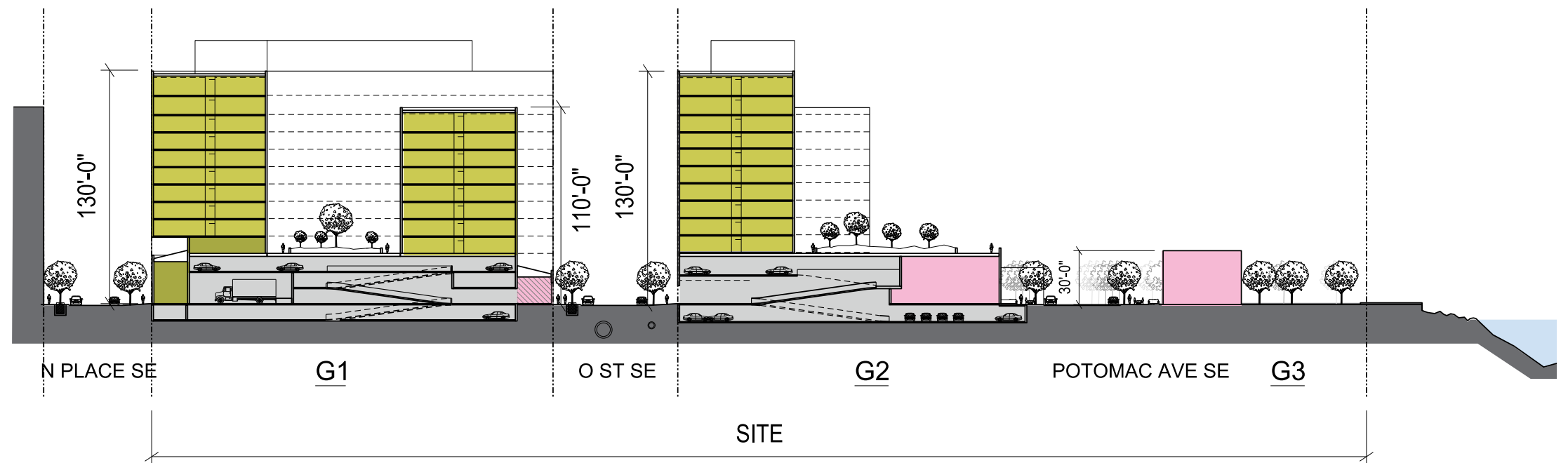


- RETAIL
- RESIDENTIAL
- RESI COMMON
- PARKING / LOADING / MEP

NOTE

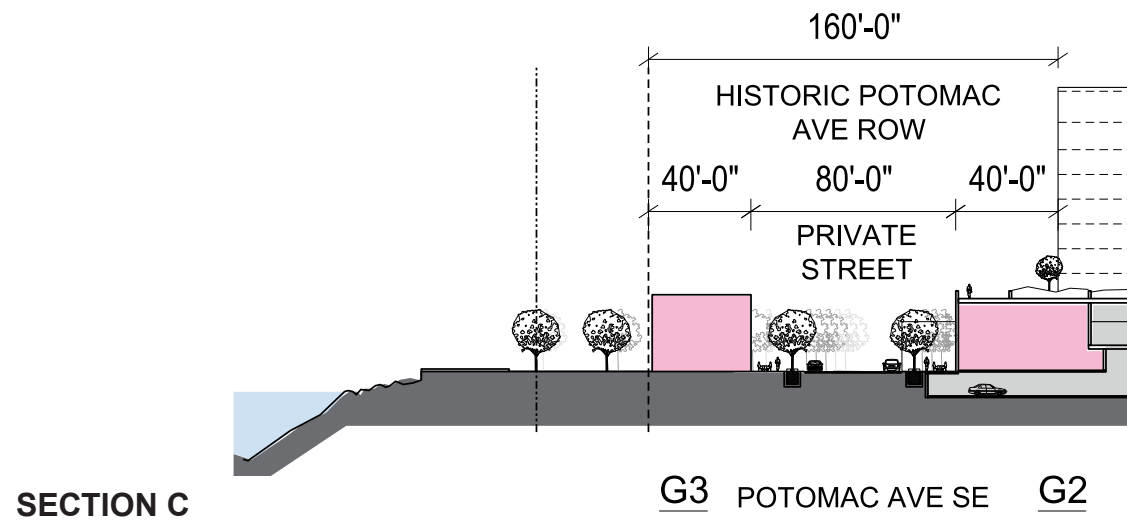
THE BUILDING HEIGHTS SHOWN ARE TAKEN FROM THE MEASURING POINTS FOR EACH DEVELOPMENT PARCEL AS SHOWN ON THE GROUND FLOOR PLAN. THE ROOF STRUCTURE HEIGHTS FOR THE G1 AND G2 PARCELS ARE 18'6" MEASURED FROM THE TOP OF THE MAIN ROOF.

SECTION B

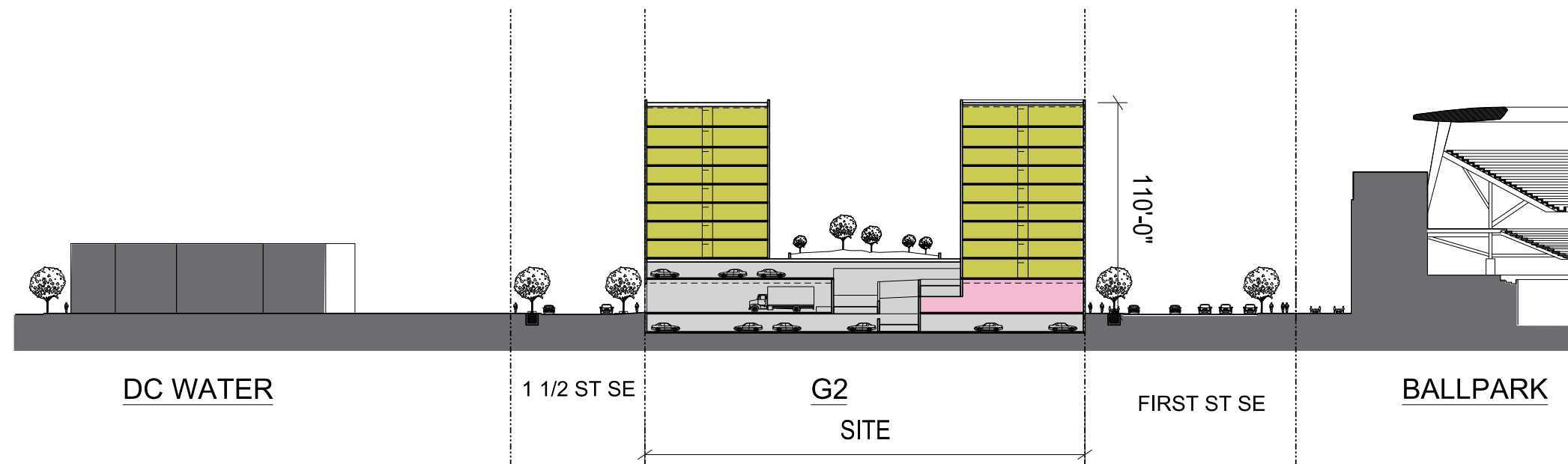


FORESTCITY

DC WATER OCCUPIED SITES

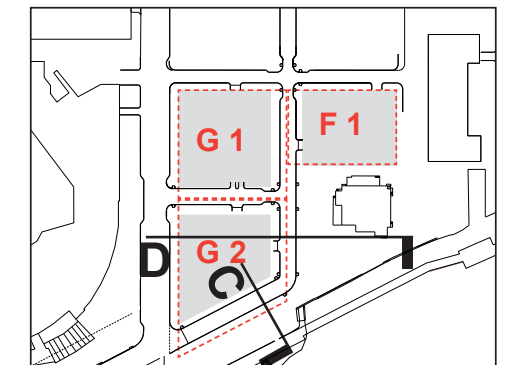


SECTION C



SECTION D

KEY



- RETAIL
- RESIDENTIAL
- RESI COMMON
- PARKING / LOADING / MEP

NOTE

THE BUILDING HEIGHTS SHOWN ARE TAKEN FROM THE MEASURING POINTS FOR EACH DEVELOPMENT PARCEL AS SHOWN ON THE GROUND FLOOR PLAN. THE ROOF STRUCTURE HEIGHTS FOR THE G1 AND G2 PARCELS ARE 18'6" MEASURED FROM THE TOP OF THE MAIN ROOF.

DC WATER OCCUPIED SITES



